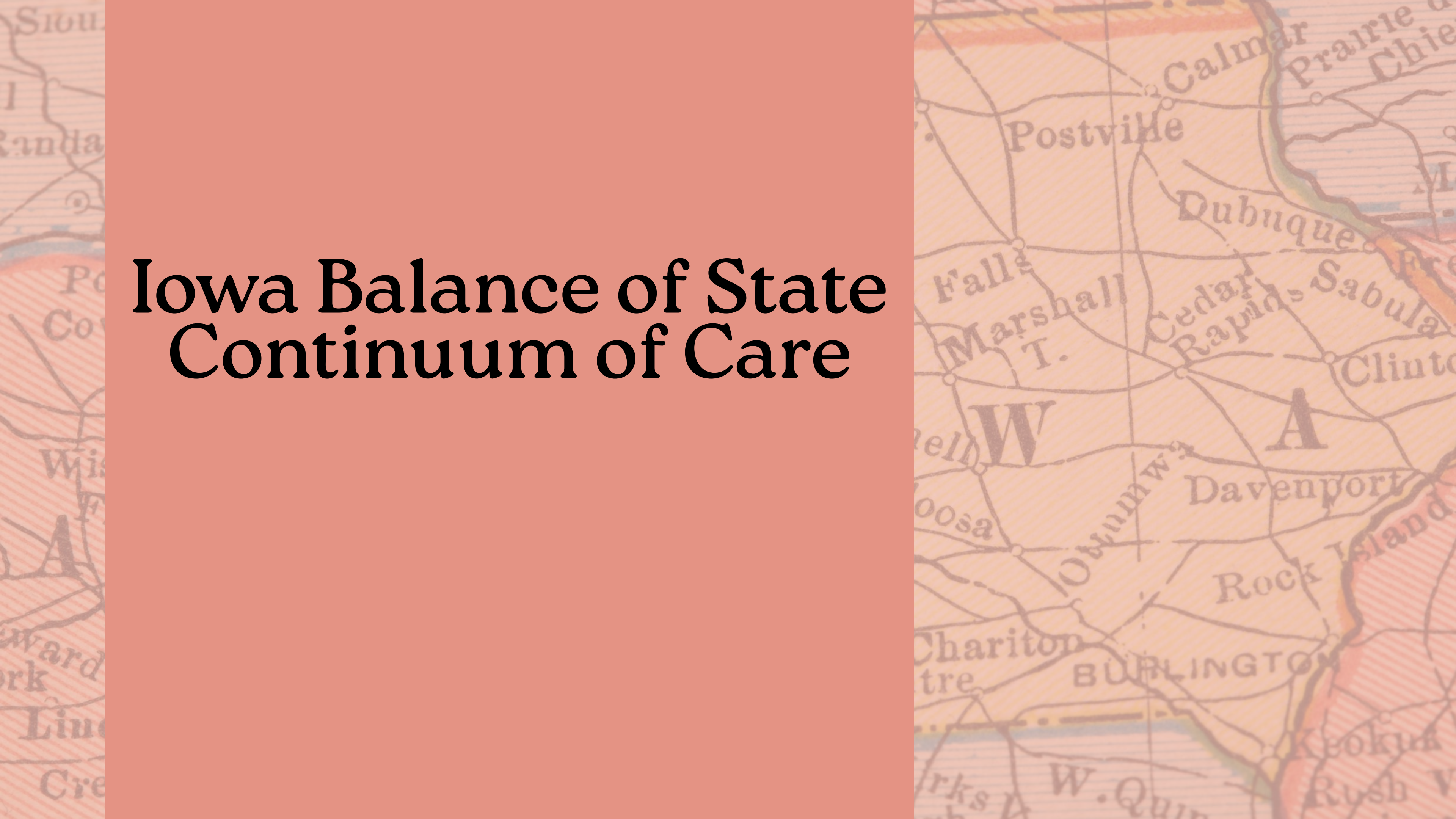


# Iowa Balance of State Continuum of Care



# About Us

## I'm Kelsey, the CoC Systems Coordinator for Iowa Balance of State Continuum of Care.

I have worked with the IA BoS CoC since July of 2025. In my role, I focus on bringing systems together to work towards ending homelessness. My goal is to reduce barriers for partners and providers to work together and streamline the homeless response system.



I have worked in the homelessness and housing field for over 10 years.

I have experience leading and developing programs for individuals and households at risk of or experiencing homelessness. I have worked in employment programs, street outreach, and housing stability.



# Iowa Balance of State Continuum of Care

## **VISION**

to end homelessness in the Balance of State

## **OUR MISSION**

The Iowa Balance of State Continuum of Care is dedicated to ending homelessness through community collaborations, data-driven strategies, and best practice housing interventions.



# What is a Continuum of Care (CoC)?

 **Continuum of Care: A Better Understanding of the Homelessness System**  
Coalition for the Homeless of Pasco County, Inc.

*What is*  
**HOMELESSNESS**



 Watch on  YouTube





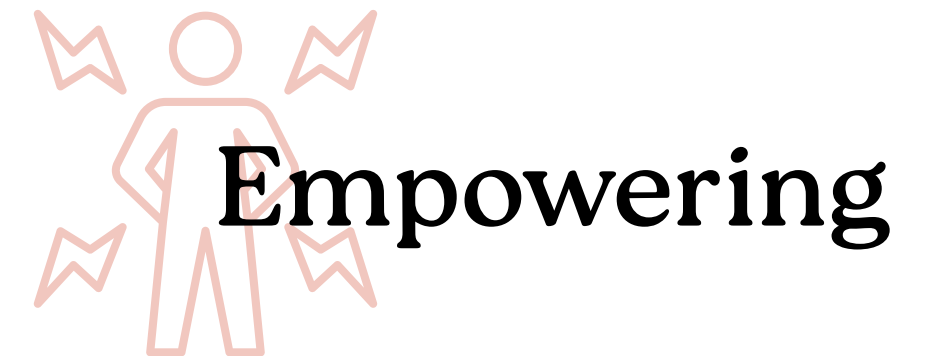
## Leading

We guide a coordinated, statewide approach to addressing homelessness. This includes setting shared goals, using data to understand what is working, and overseeing funding decisions for local housing programs. We also manage the statewide system that tracks services and outcomes to help improve results.



## Supporting

We organize and implement a local competition to secure funding from the U.S. Department of Housing and Urban Development (HUD) for local organizations, enabling them to provide housing and related services. We offer training, technical assistance, and regular communication to help communities strengthen their work. We also organize the process that connects people to available housing and resources.

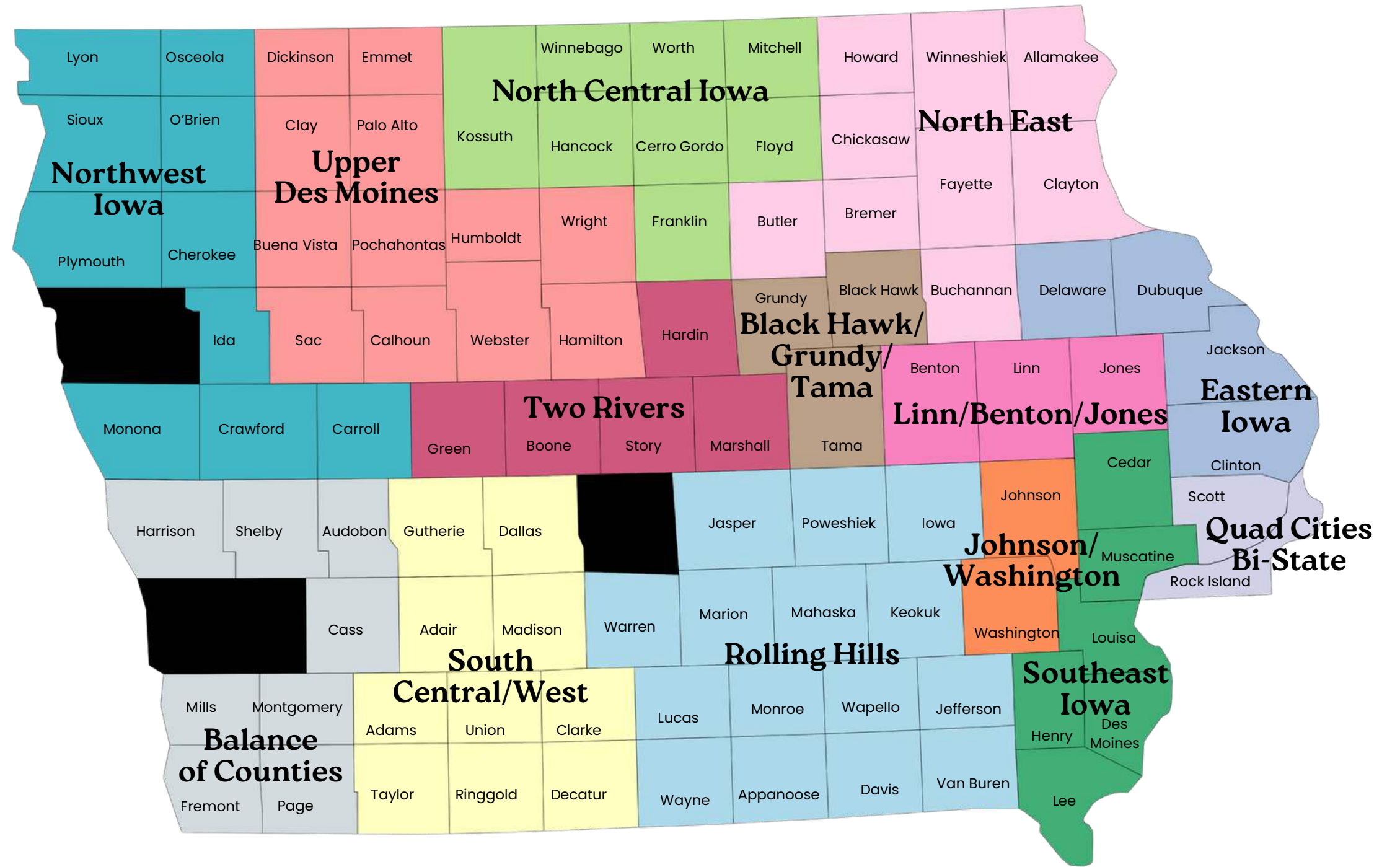
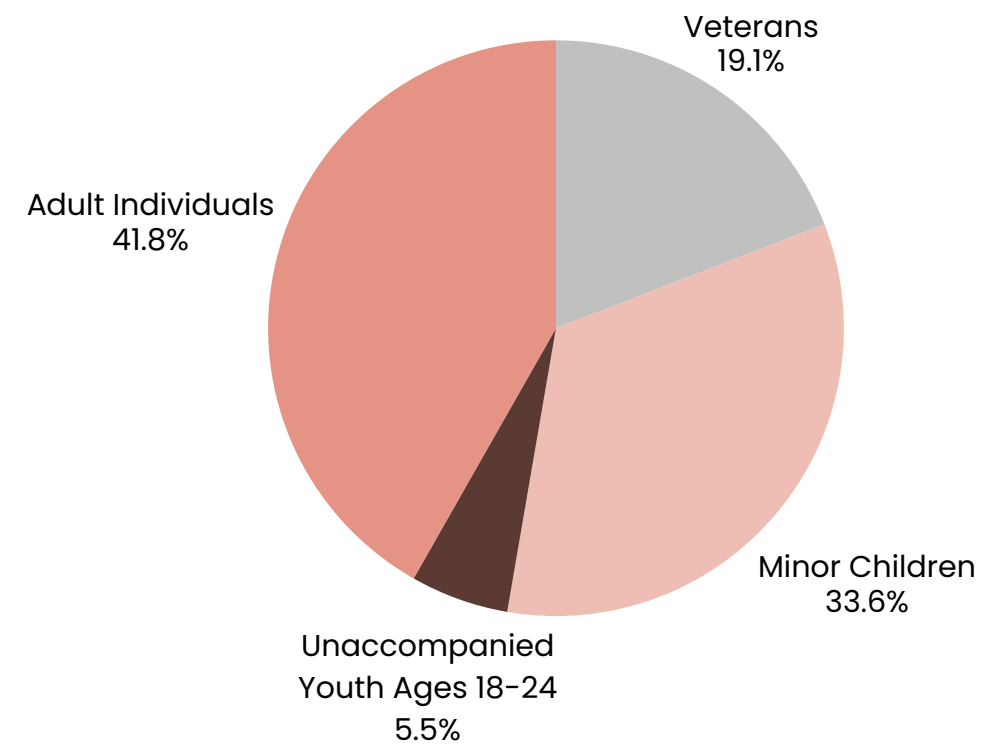


## Empowering

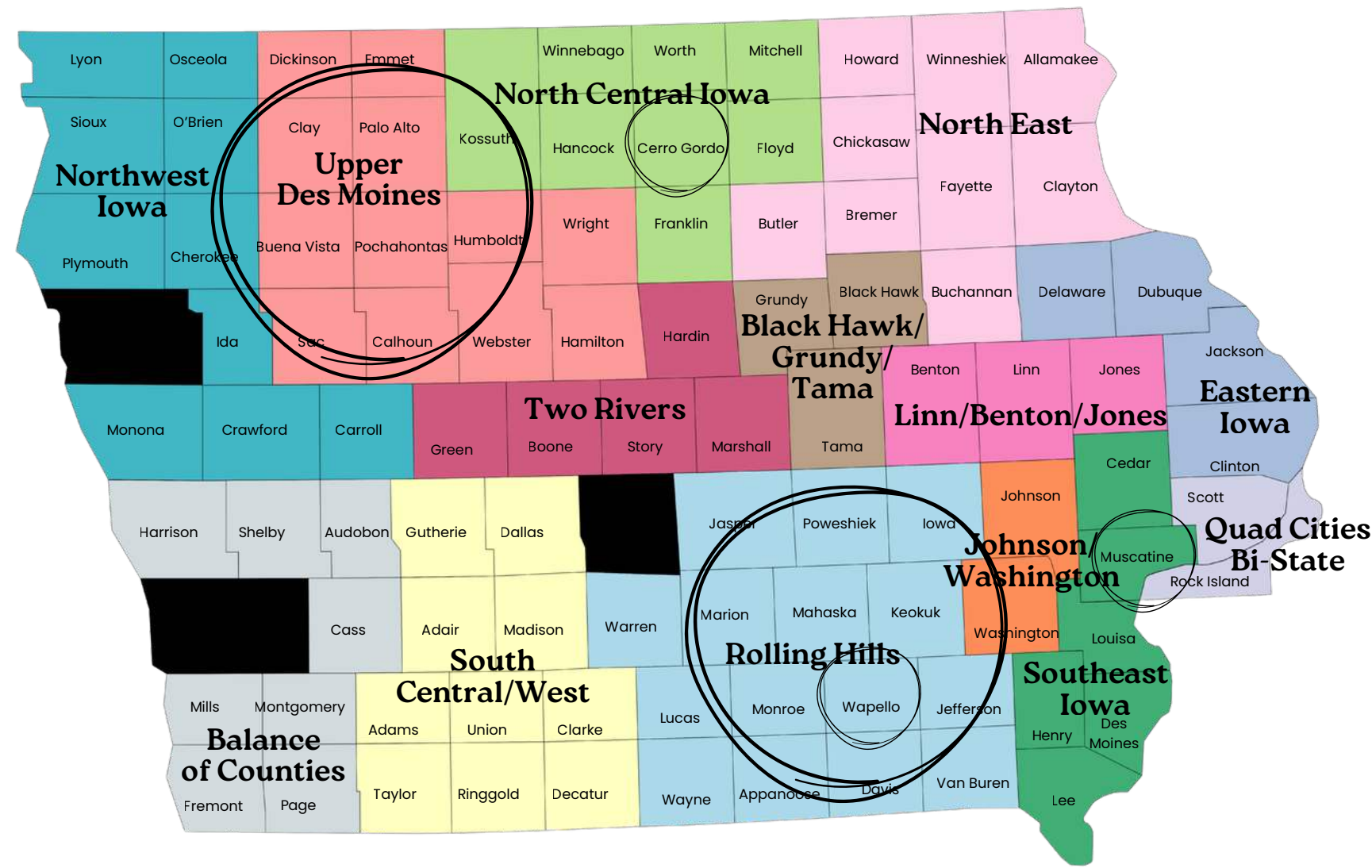
We bring partners together to collaborate and solve problems. We create opportunities for community members to get involved, share feedback, and help shape solutions. We advocate for improvements so that people experiencing homelessness have better access to safe, stable housing.

- 9 Permanent Supportive Housing Projects
- 10 Rapid Rehousing Projects
- 3 Joint Transitional Housing/Rapid Rehousing Projects
- 6 Rural Homelessness Projects
- 6 Youth Housing Projects
- 3 Coordinated Entry Projects

Homelessness in Iowa's  
Balance of State CoC  
(2024)



# CoC Funded Rural Housing Projects



## Central Iowa Shelter & Services

- CISS Wappello County: **Permanent Supportive Housing** project covering Wapello County.
- Connect Street Outreach: **Street Outreach** project covering Appanoose, Davis, Iowa, Jasper, Jefferson, Keokuk, Lucas, Mahaksa, Marion, Monroe, Poweshiek, Van Buren, Wapello, & Wayne Counties, serving individuals (adults).

## Friends of the Family

- Always Home: **Permanent Supportive Housing** project covering Cerro Gordo County, serving adults & families.

## Muscatine Center for Social Action

- MCSA RRH: **Rapid Rehousing** project covering Muscatine County, serving individuals (adults) & families.

## Upper Des Moines Opportunity

- Upper Des Moines Rural: **Rapid Rehousing** project covering Buena Vista, Calhoun, Clay, Dickinson, Emmet, Hamilton, Humboldt, Palo Alto, Pocahontas, Sac, Webster, & Wright Counties, serving individuals (adults) & families.

**Permanent Supportive Housing (PSH):** an evidence-based housing intervention combining non-time-limited, affordable rental assistance with voluntary, flexible supportive services for individuals with chronic illnesses or disabilities experiencing homelessness

**Street Outreach (SO):** the direct engagement of individuals experiencing unsheltered homelessness in places not meant for human habitation (parks, abandoned buildings, streets) to build trust and connect them with emergency services, housing, and healthcare.

**Rapid Rehousing (RRH):** an intervention designed to help individuals and families experiencing homelessness move into permanent housing as quickly as possible. It focuses on low-barrier access to housing, offering short-to-medium-term financial assistance and tailored, voluntary support services to help people achieve long-term stability.



**Iowa Balance of State CoC-funded programs served 20,168 people in Iowa during 2024.**

**This includes clients who accessed Coordinated Entry and attained referrals to other assistance programs, sometimes alleviating the need for homelessness crisis response or higher cost interventions.**

## Why Partner with a CoC?

- Collaboration with other systems of care including workforce, education, local and state government, judicial, and more.
- Proactive response based on data-driven interventions
- CoC programs demonstrate strong outcomes in helping individuals and families achieve stability.

**1,542**

clients served in CoC-funded Rapid Rehousing Projects, providing short term rental assistance to people experiencing literal homelessness.

**85%**

of clients have positive exits from CoC-funded RRH projects to stable and permanent housing.

**686**

clients served in CoC-funded Permanent Supportive Housing. Currently, the CoC is the only funding stream for these services.

**88%**

of clients enrolled in PSH programs have exits to permanent destinations or are maintaining housing!

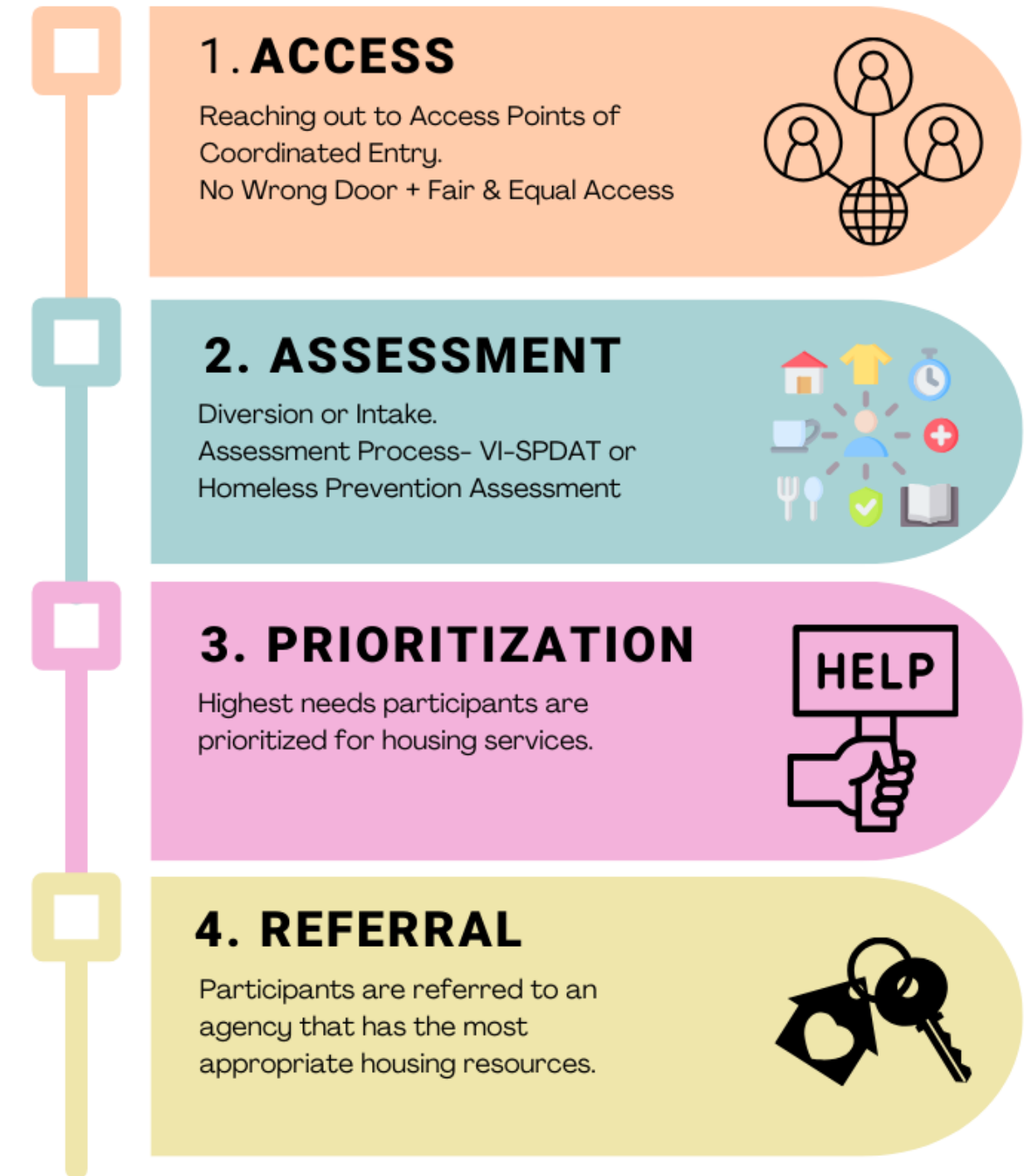
# Coordinated Entry

Coordinated entry (CE) refers to the process used to assess and assist in meeting the housing needs of people at risk of homelessness and people experiencing homelessness.

CE process helps communities systematically assess the needs of program consumers and effectively match each individual or family with the most appropriate resources available to address that individual or family's particular needs.

Coordinated Entry Can...

- Be a process to connect people in a housing crisis to providers.
- Quickly assess strengths and barriers via a standardized tool.
- Quickly connect people to appropriate services.
- Provide the ability to gain access to the best options to address needs, based on client choice.
- Ensure people with the highest needs are prioritized for the most intensive assistance.

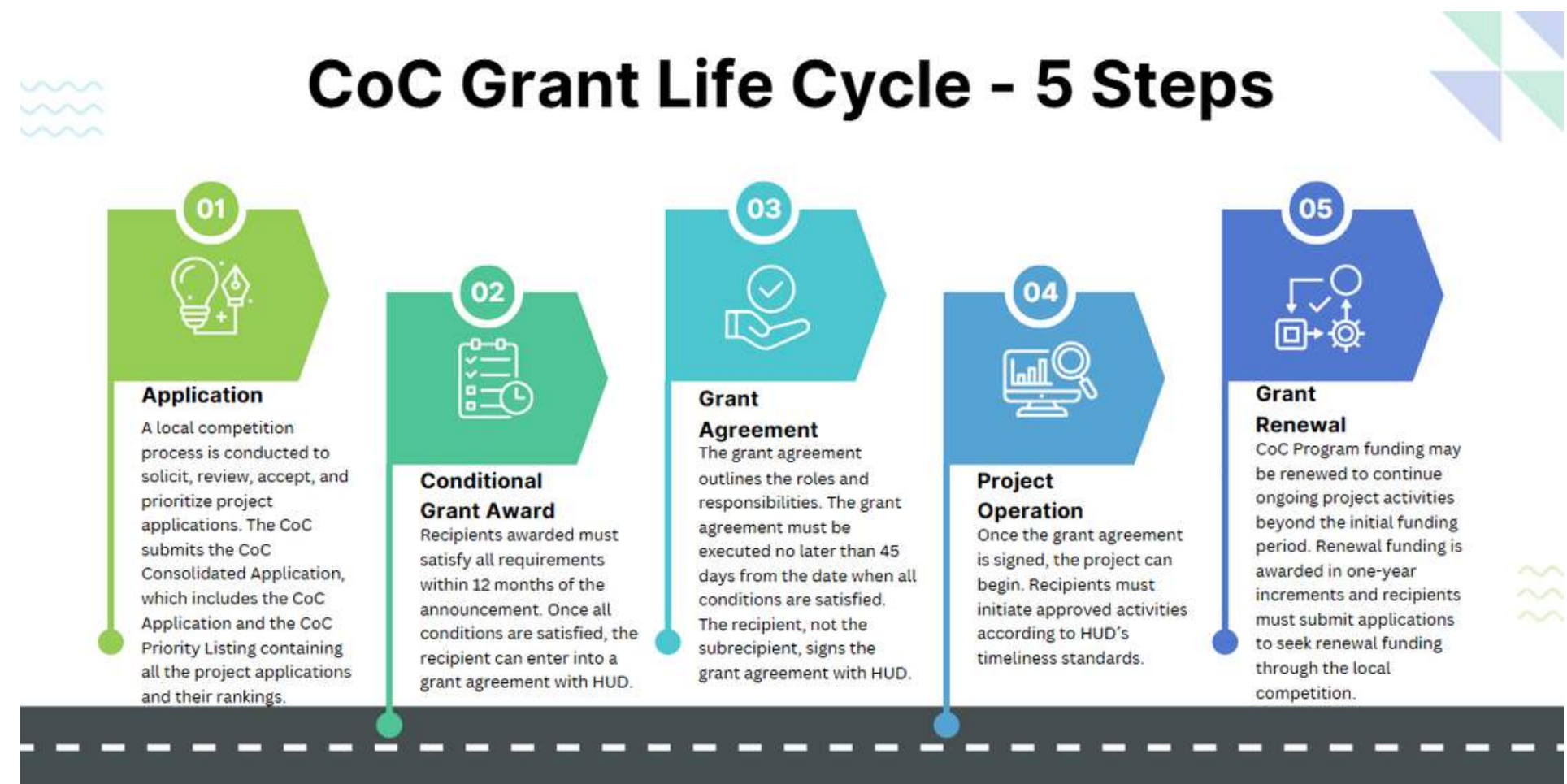


# Iowa Balance of State CoC Local Competition

The Iowa Balance of State Continuum of Care (IA BoS CoC) conducts an annual local competition to determine which projects are recommended for federal HUD funding. The IA BoS Grant Competition Task Group leads this process, evaluating, scoring, and ranking both renewal and new projects based on performance, data quality, and alignment with the CoC's goals to end homelessness.

Grantee participation in the local competition is essential to securing continued federal funding.

For updates and resources, visit [iaboscoc.org](http://iaboscoc.org) or attend the monthly Grant Competition Task Group meetings held virtually on the 1<sup>st</sup> Monday of each month.



# Youth Initiatives

Across the Iowa Balance of State, communities are working together to ensure youth and young adults experiencing homelessness have access to safe housing, supportive services, and opportunities to build stable futures.



**Youth Voice**



**Housing Opportunities**



**Flexible Supports**



**Peer Leadership**



**Community Collaboration**

## **Youth Homelessness Demonstration Program (YHDP)**

IA BoC CoC was awarded \$6.7 million in federal funding to launch new housing and support programs designed specifically for youth and young adults experiencing homelessness. These programs prioritize youth choice, flexible supports, and pathways to long-term stability.

### **Planned initiatives include:**

**Rapid Rehousing for Youth** helping young people quickly move into their own housing with rental assistance and supportive services.

**Joint Transitional Housing - Rapid Rehousing programs** providing crisis housing while supporting youth as they transition to permanent housing.

**Youth-focused supportive services** such as system navigation, community collaboration, and peer support.

**Enhanced youth data and evaluation efforts** through HMIS to track outcomes and improve services.

# Iowa Homeless Coalition

Iowa Balance of State Continuum of Care is a member of the Iowa Homeless Coalition.

Iowa Homeless Coalition (IHC) is a group of providers, partners, and community members across Iowa. It was formed to address the growing number of local and statewide policies that impact homeless services and our partners.

Membership is open and available to organizations and individuals. IHC offers scaled dues based on organizational size.

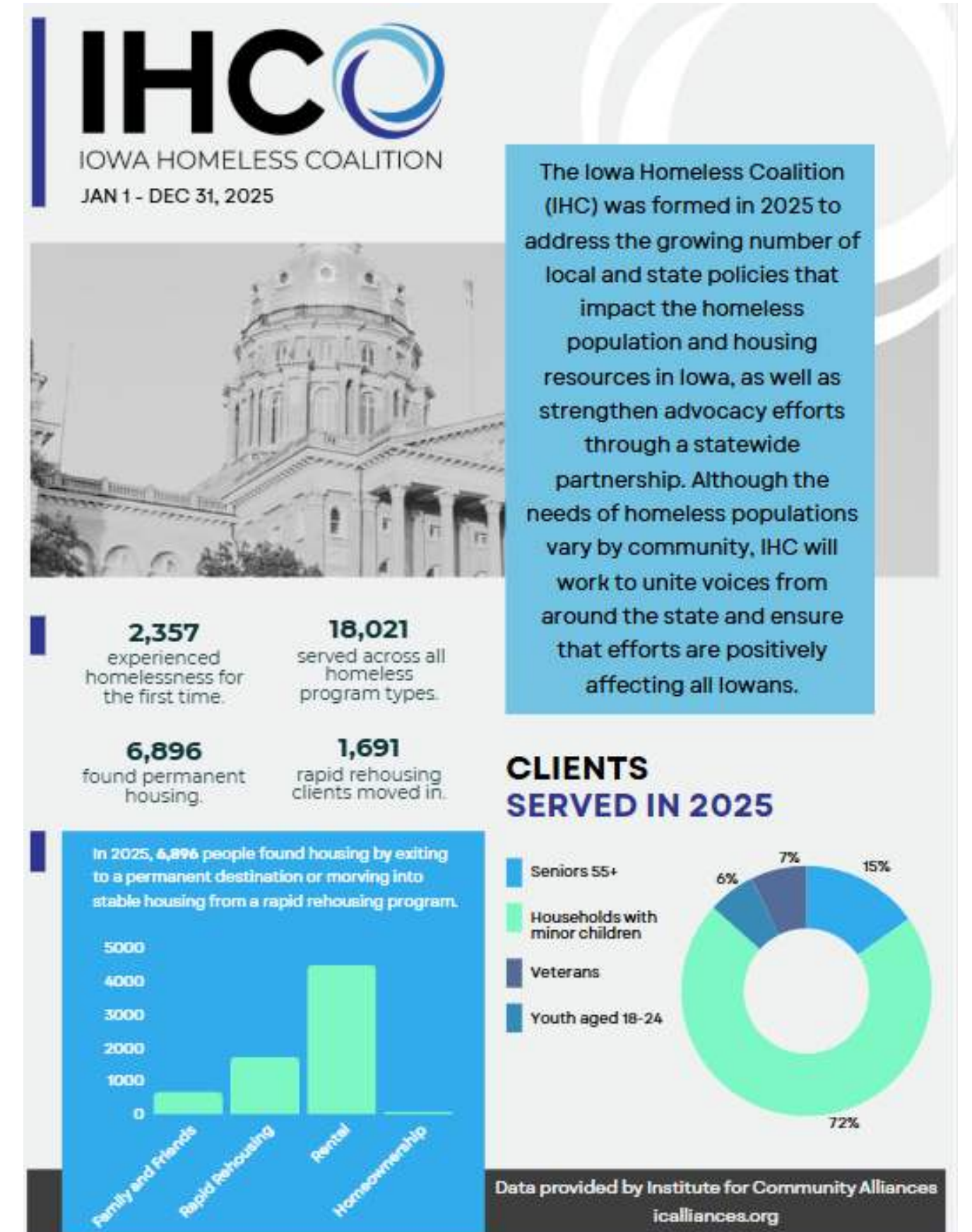
## Purpose:

- Address increasing local and state policies impacting the homeless population.
- Strengthen advocacy efforts through a statewide partnership.
- Recognize that needs vary by community.

## Goals:

- Unite voices from various communities across Iowa.
- Ensure efforts positively affect all Iowans.

Learn More:



# Systems of Care

The Iowa Balance of State Continuum of Care is continuing to strengthen our Systems of Care network across the state to strengthen our strategic plan and prepare for the future.

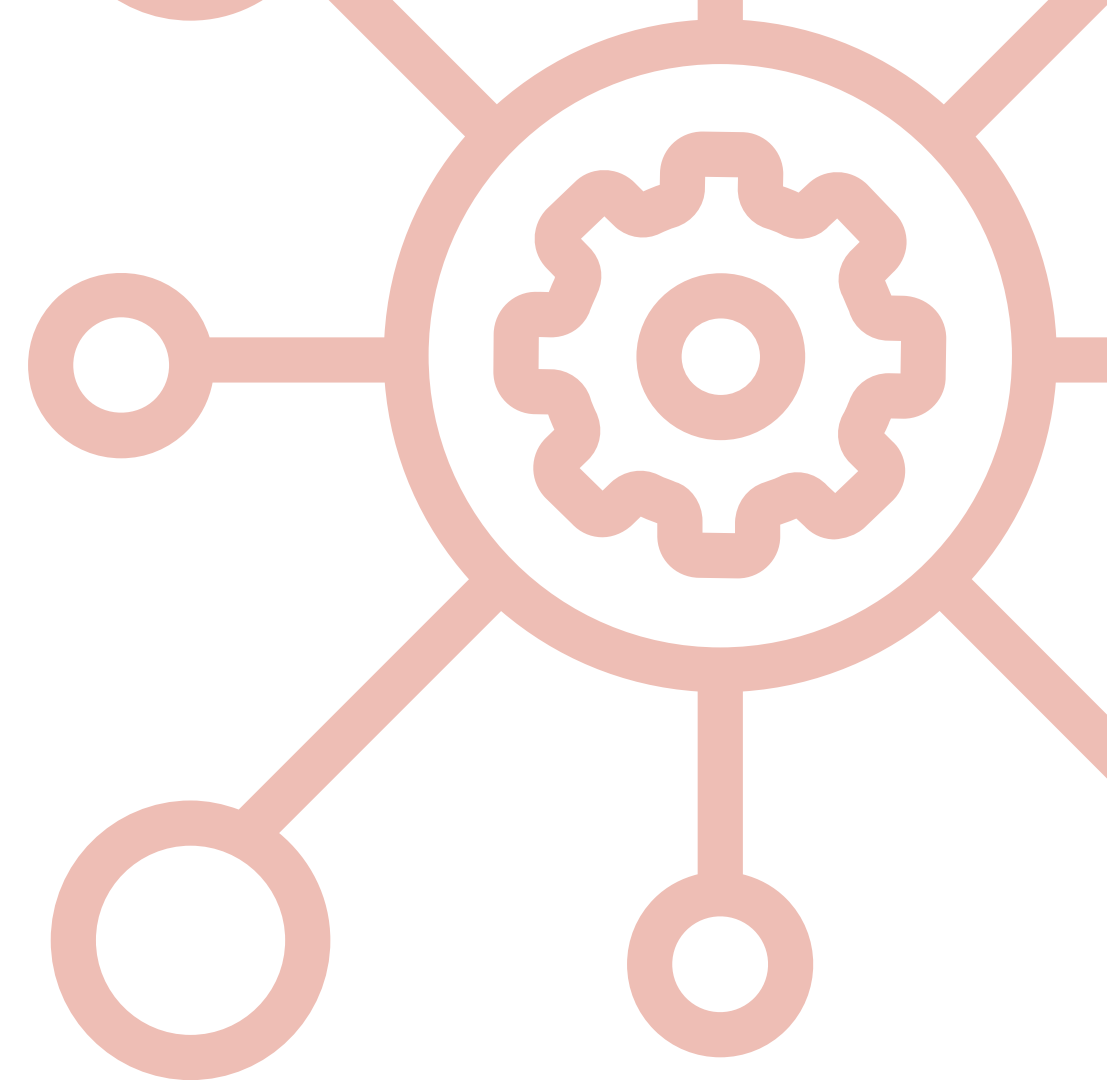
## Current Focus:

- Healthcare
- Corrections and Judicial
- Elected Officials - Local, State, Federal

## Why These?

Both healthcare and corrections systems have shown strong interest and readiness to collaborate in response to a changing landscape.

These partnerships are key to improving coordination, access, and outcomes for individuals experiencing or at risk of homelessness.



## Where we bring community together:

- Annual Meeting - May 5, 2026
- Housing Problem Solving Pilot
- Coffee with the CoC - Every 2<sup>nd</sup> Tuesday
- Youth Symposium - November 10, 2026
- CoC Networking - Every 2<sup>nd</sup> Wednesday
- Grantee Learning Series
- YHDP Office Hours

# Housing Problem Solving: CoC Pilot Project

## Housing Problem Solving:

Housing Problem Solving is a person-centered approach designed to quickly resolve a housing crisis and avoid or rapidly exit from literal homelessness.

- Identify a safe housing option for clients
- Shorten a period of homelessness for a household
- Connect households back to their support system

Can be used with any person at any time - no matter where they are in their housing crisis

## When to use HPS:

### Prevention

Targeted towards very low income people who are about to lose their housing or have received an eviction notice.

Typically prevention programs are associated with funding sources and provide rental or utility arrears.

### Diversion

Targeted towards households who have lost their housing and are about to enter a shelter or the homelessness response system.

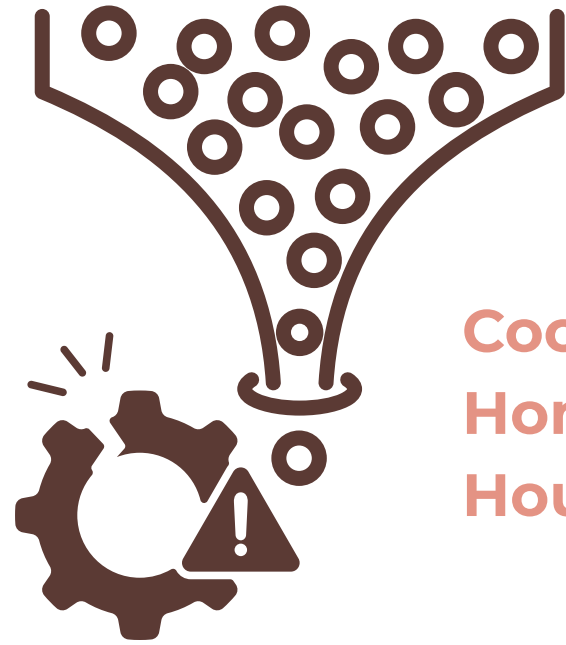
The goal of diversion is to find short or long term solutions to avoid entering shelter altogether.

### Rapid Exit

Targeted towards households who have already entered the homelessness response system.

Individuals who rapidly exit have the ability to resolve their situation, but may need support in problem solving.

# Why Do HPS?



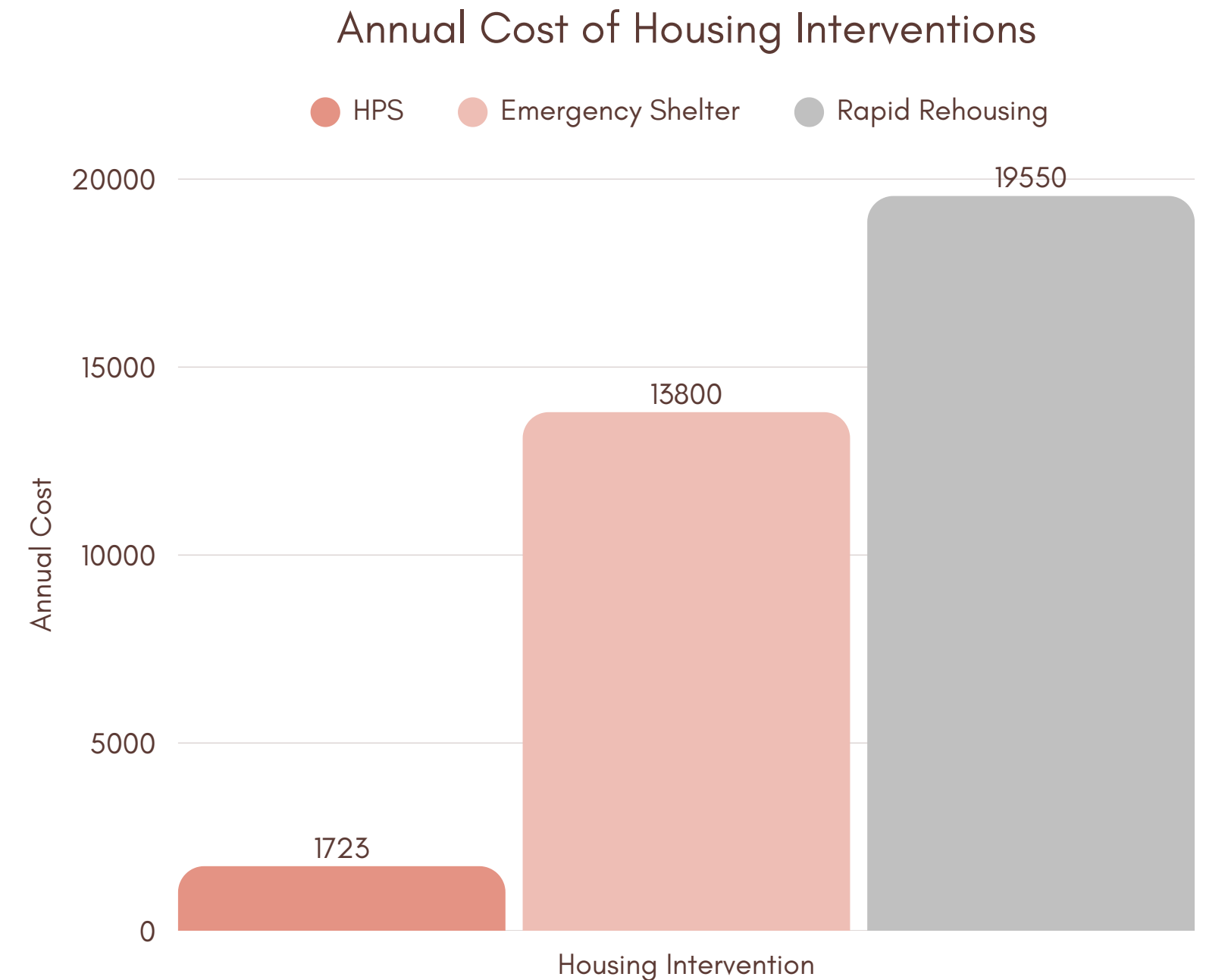
**Coordinated Entry:** Bottlenecked  
**Homeless Service Providers:** At Capacity  
**Housing Costs:** Rising

## Our Goal:

Train community partners and systems to have effective housing conversations

Reduce demand on Coordinated Entry System

Increase capacity of providers



# Outcomes and Updates

Since launching in mid-2025, we have provided training to 3 community partners.

- 1 statewide organization
- 2 regional focused organizations

On the horizon: more regional focused trainings to provide local and relevant resources



## Before HPS

**59%** not familiar or somewhat not familiar with HPS

**73%** not or somewhat not confident in using HPS in their practice

**80%** have never used HPS prior to referring a person to Coordinated Entry

**60%** referring a person to Coordinated Entry on a regular basis

## After HPS

**76%** familiar or very familiar with HPS

**75%** confident or somewhat confident in using HPS in their practice

**88%** currently or will use HPS prior to referring a person to Coordinated Entry

**40%** referring a person to Coordinated Entry on a regular basis

# Housing Problem Solving Workshops

Build practical skills to help people resolve housing crises quickly and creatively

Our interactive workshop focuses on Housing Problem Solving (HPS) as a frontline intervention to prevent and end homelessness.

Participants will learn how to apply best practices that center client choice, leverage community resources, and identify immediate, realistic housing solutions beyond shelter and long-term programs.



## What You'll Learn:

- Core principles and best practices of Housing Problem Solving interventions
- How to use HPS in real-world conversations
- Techniques for strengths-based engagement
- Creative and diversion-focused housing solutions
- How HPS fits within a broader system of care and Coordinated Entry

## Who Should Attend:

- Homeless service providers and outreach staff
- Coordinated Entry and intake teams
- Case managers and housing navigators
- Community partners and system stakeholders

## Training Format:

- Tailored to your team or organization
- In-person or virtual options available
- Content can be adapted to agency needs

## Schedule a Training:

Interested in bringing this workshop to your team or community?  
Contact us to schedule a Housing Problem Solving training for your organization!

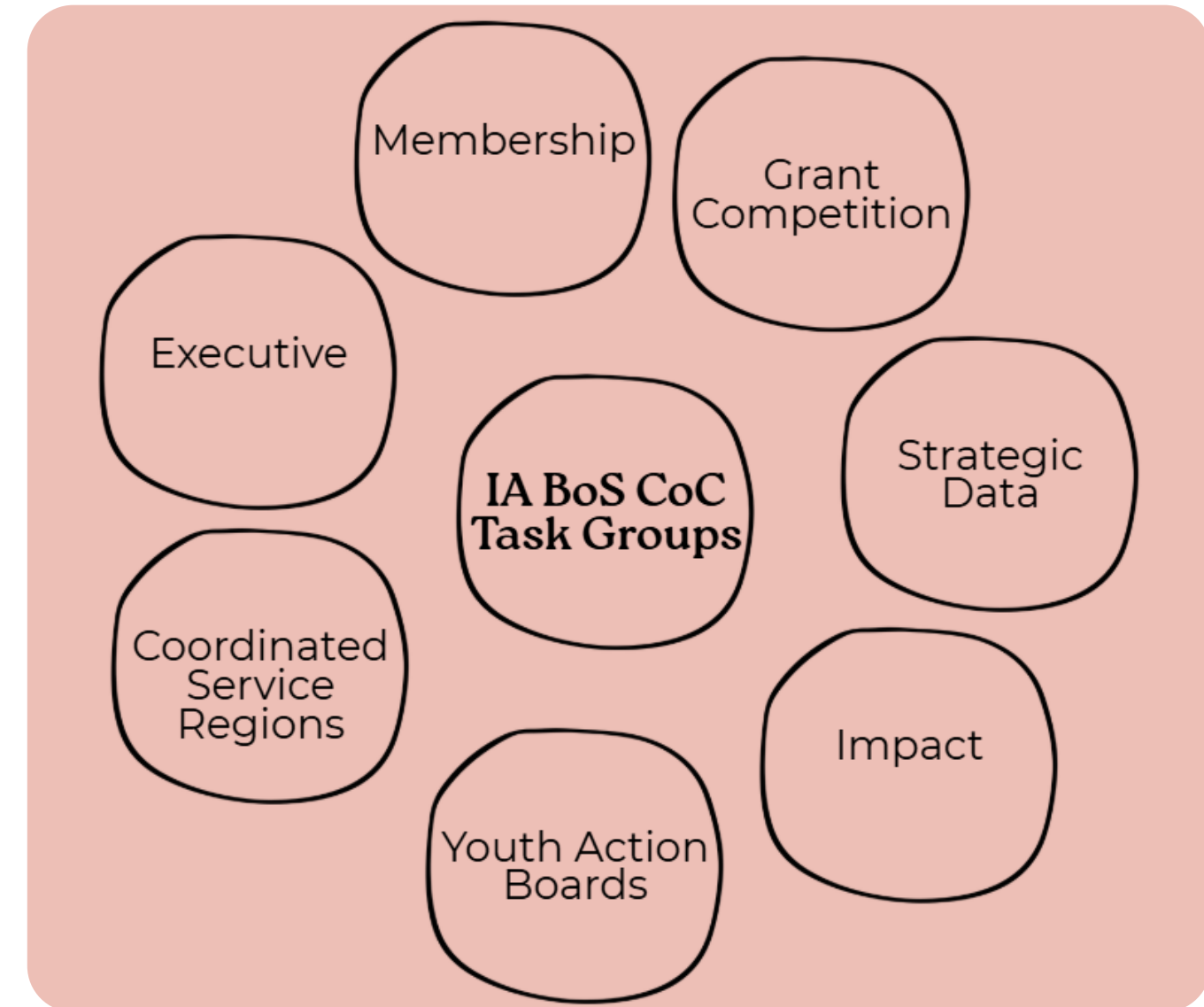
The background of the slide is a repeating pattern of question marks in a light gray color. The question marks vary in size and are scattered across the white background. A solid reddish-brown horizontal band runs across the middle of the slide, containing the text.

**Questions?**

# Ways to be Involved

Iowa BoS CoC is always looking for community members with a passion to end homelessness in their community. You or your agency can be involved in this work by:

- Becoming an Access Point
- Joining a Task Group
- Donating
- Advocating
- Volunteering



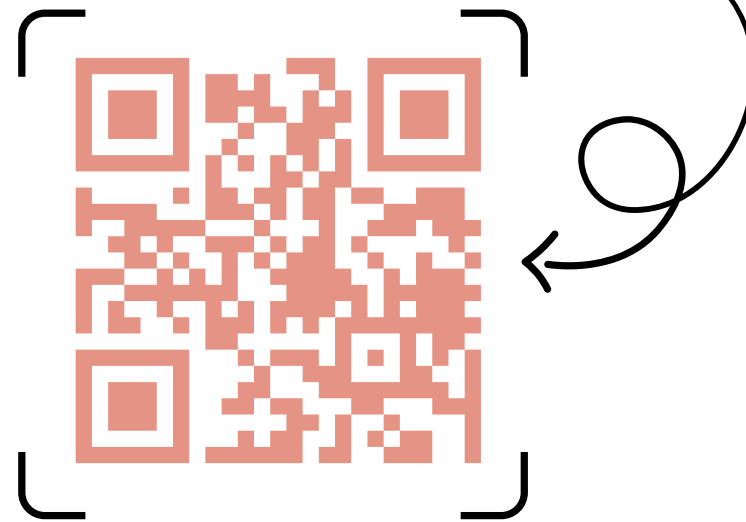
# Get Connected!

Visit our website to join our mailing list, read our blog and more:



[iaboscoc.org](http://iaboscoc.org)

scan me!



Follow Along on Socials:



[iaboscoc](https://www.facebook.com/iaboscoc)



[iaboscoc](https://www.instagram.com/iaboscoc)



[Iowa Balance of State CoC](https://www.linkedin.com/company/iowa-balance-of-state-coC)